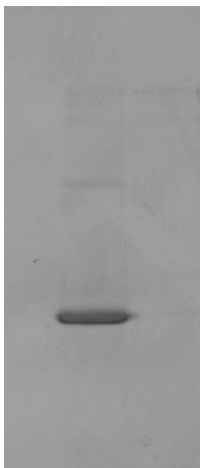


## Specification sheet

<b>Protein</b>	<b>Recombinant human prolactin</b>
<b>REF</b>	<b>17-05</b>
<b>Sequence</b>	Leu29-Cys227, N-terminal tag: MRGSHHHHHHGS
<b>Source</b>	<i>E. coli</i>
<b>Molecular weight</b>	24 kDa
<b>Format</b>	Liquid
<b>Purification</b>	Ni-NTA-Sepharose chromatography
<b>Purity</b>	90% (determined by reducing SDS-PAGE)
<b>Buffer</b>	20 mM Tris-HCl, 10 mM EDTA, pH 8.0
<b>Storage</b>	+4°C short term; -18...-22°C or below for 3 years; avoid multiple freeze/thaw cycles
<b>Applications</b>	ELISA, western blotting (as a standard)

24kDa



Reducing SDS-PAGE of recombinant human prolactin (15% gel)